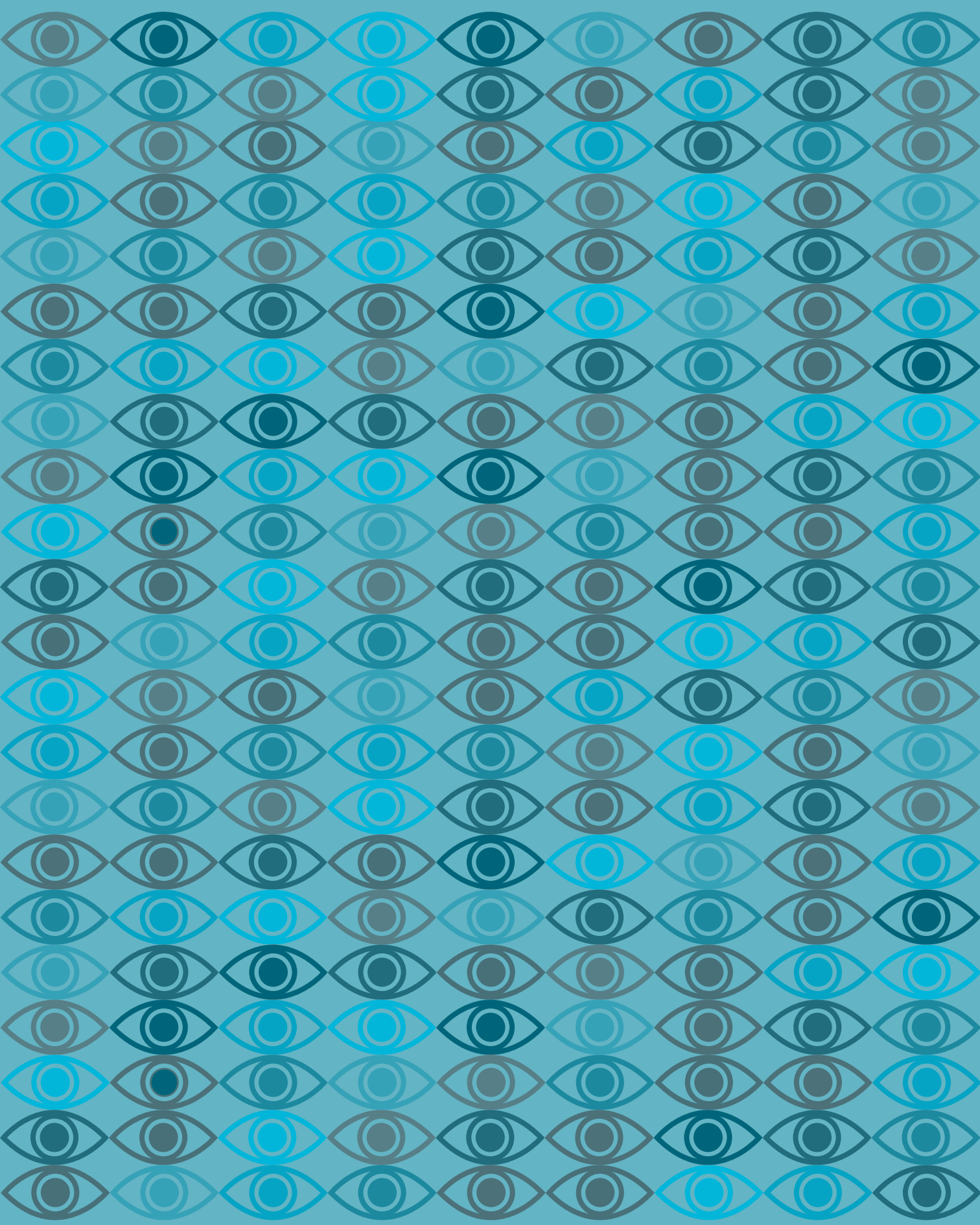
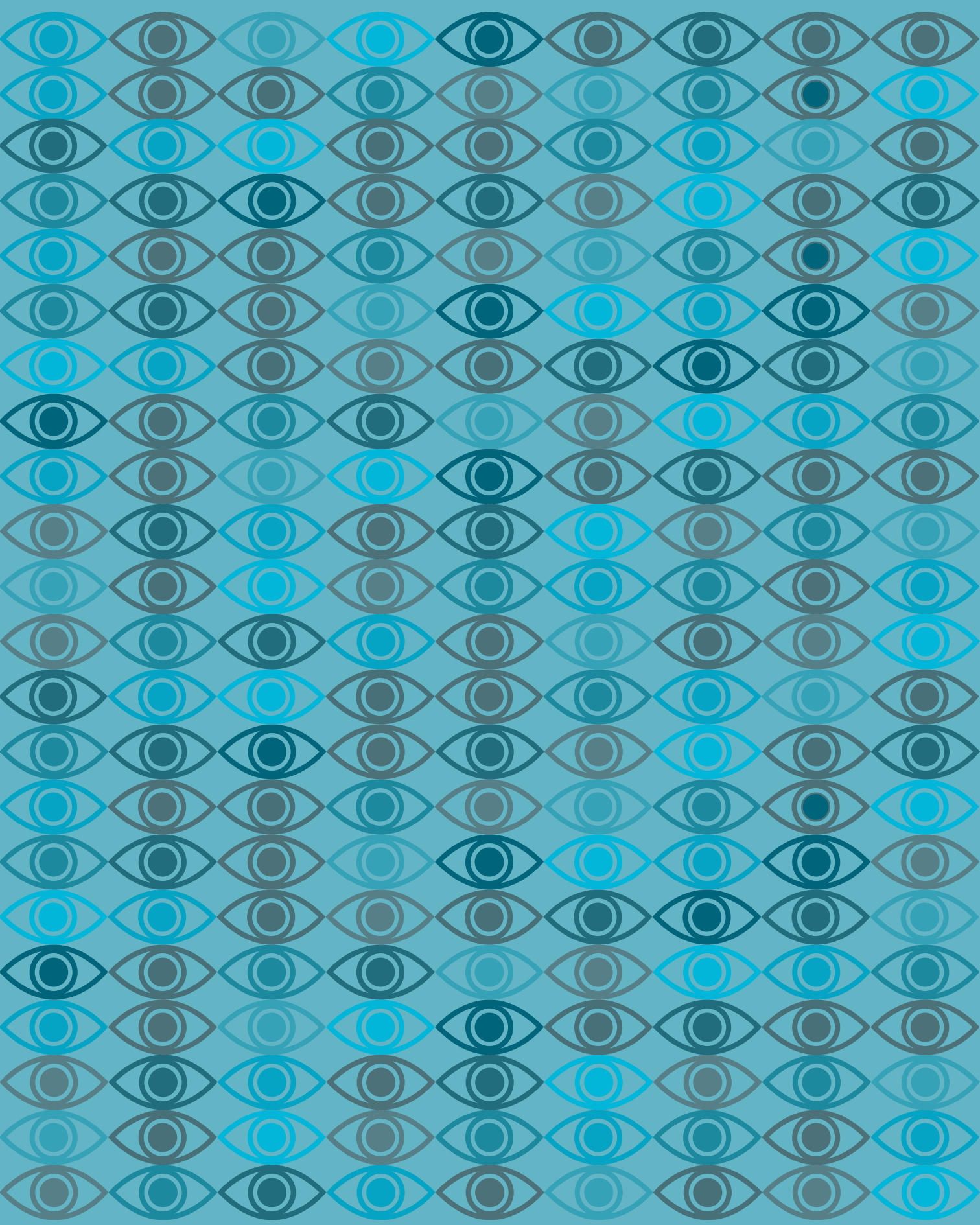




EHESP

MPH / YEARBOOK 2010-2011
MASTER OF PUBLIC HEALTH





MPH / YEARBOOK 2010-2011
MASTER OF PUBLIC HEALTH

TABLE OF CONTENTS

3
FORWARD
FROM
THE DEAN

5
FORWARD FROM
THE HEAD
OF THE MPH

7
MODULES'
COORDINATORS

15
MPH
ADMINISTRATION
TEAM

17
PHIN
ASSOCIATION
EXECUTIVE
BOARD

19
MPH2
STUDENTS

34
MPH1
STUDENTS

43
MPH
STUDENTS'
EVENTS

48
FOR SIGNING

FORWARD FROM THE DEAN, EHESP

I am happy to introduce this yearbook which is a great reminder of the vibrant life of the MPH class on the EHESP campus. The students in this MPH class are EHESP's pioneers, given that the MPH programme is so new to our School, and this is the first Yearbook ever published. I am proud of all of you, dear MPH students. After a rigorous selection process, you succeeded in joining our program at the EHESP School of Public Health in Paris. You then took various courses, some of which were part of the core curriculum, i.e. minimal requirements to attain public health professional competencies, and others which were part of your chosen concentration, (e.g. biostatistics, epidemiology, environmental health, health policy and management, social and behavioral sciences, international health and humanitarian action). Sometimes, you preferred to remain within the general track of public health, i.e. to become a specialist in general public health or a "global health professional" as it is often called nowadays. Your internship was a remarkable experience for all of you, as I have been told. It was a practicum or a learning experience during which you practiced public health. It was a period where you applied your knowledge in the field to help your colleagues and mentors solve real public health issues. In most cases, your mentors were fascinated by the enormous added value you brought, together with your fresh and innovative spirit. This was not due to EHESP, nor to our (fantastic) Faculty, but this was mainly due to your perseverance, your skills and your personal background. Because you are the metal from which your golden medal has been manufactured to reward your success this year. Each year, since this MPH degree was created, more than half of the students have come from abroad, i.e. outside of the European Union. The fact that some of you are coming from France or other European countries, and others from many different parts of the world, including highly developed and developing countries, is a key element which lends such an open-minded atmosphere to this MPH programme and to our school as a whole.

Moreover, the fact that you are all coming from various disciplines and academic origins allows for interdisciplinary cross-fertilization. For instance, some of you are more skilled in quantitative fields and are able to help those coming from the social and human sciences. Others, thanks to a solid background in medicine or pharmacy, helped those coming from non-medical domains. Similarly, native Parisians may have helped those coming from abroad to find somewhere to live at an affordable cost in our fabulous but expensive Capitale; our Faculty members helped those who asked for some financial help to find a part-time job to sustain their studies or daily life. We do not pretend that the curriculum is perfect and we will not be fully satisfied until you are, the reason why all your remarks, and sometimes complaints are always welcome and useful.

On behalf of the EHESP, I would like to thank all of you for the contribution you have so generously made to EHESP, to our Faculty, and to your class. I would also like to thank all members of our staff including those you saw regularly, as well as those who were hidden behind their computer screens, telephones, or in their offices, in Rennes or in Paris and who spent more time than what was asked of them to deliver the best of what our School has to offer to your MPH class. Wishing you all good luck and a fulfilling life. We hope your newly obtained degree will allow you to advocate for better health in the world and to help the people of your country to live longer and in better health. We hope you will keep us informed as to the path you take and will take advantage of the ties you've created with Faculty and classmates. We're proud to have you as our respected alumni!

Antoine Flahault, DEAN, EHESP.



FORWARD FROM THE HEAD OF THE MPH



When I was first offered the opportunity to become the Director of EHESP's MPH programme, I hesitated at the thought of the challenge which lay ahead of me. I imagined the administrative hassle and all the organisational problems which could potentially arise and I didn't know if I was up for it. I ruminated about it for weeks and finally decided to accept after several colleagues told me that they saw me as the perfect person for this job and somebody who could really help students, especially a diverse group coming from all walks of life and from all over the world. The first month was definitely a challenge as countless administrative details had to be resolved as students got settled in, teachers had to adjust their modules accordingly to the level of the students, and things had to be reorganised here and there. It was a while before everything began to work smoothly. From the outset, I was amazed at how hard the students worked and their desire to get as much as possible out of their courses. Many would stay at Reid Hall long after class to talk to professors, do homework, review the material from that day's classes, and work together in groups. I was impressed and truly inspired by the tenacity of the students. Many came to me at the very beginning of the semester

to discuss prospects of stages. I enjoyed the many interesting conversations we had to better understand where students' strengths lie in order to help them find the perfect stage and I might add that I think in most cases, we succeeded!. In spite of the turmoil that we experienced from time to time at Reid Hall, I always looked forward to the time that I spent there with the students as well the professors coming to teach not only from EHESP, but from all over the world. The atmosphere at Reid Hall was always vibrant, stimulating, and very positive. I was impressed at how quickly students learned to work with each other, and truly benefit from the knowledge and skills others might have in a domain completely different from their own. I think in the process, I learned more from the students than I could have ever expected and this is what made the experience so rewarding and fun !

I wish you all great success in all of your future endeavors, whatever those may be. You all have the potential to go out and change the world, given your passion for learning, your strong work ethic, your enthusiasm, and your kindness. I will look back very fondly upon the time we spent together this past year, and I hope you will keep in touch and let us know what amazing things you end up doing throughout your lives. All the best!

Martine M Bellanger, PhD, Director,
MPH programs, EHESP.

MODULES' COORDINATORS / MPH1

BARD Denis,
Epidemiology / MPH1



Dr. Denis Bard, a professor of Epidemiology within the Department of Epidemiology and Clinical Research at EHESP, is a physician by training. Dr. Bard found himself avidly interested in public health after a mission in Afghanistan with Médecins sans Frontières in 1981. Following a second mission in Chad, Dr. Bard was convinced that his professional future lay in this area.

He then went on to obtain masters degrees in nutritional epidemiology and Public Health. Before joining EHESP in 1998, he worked for 6 years as a researcher in risk assessment at the French utility company where he contributed to the implementation of this type of public health approach in France. He also worked at the French Institute for Radioprotection where he founded its Epidemiology Laboratory. Dr. Bard is based in Rennes, Brittany. He's the coordinator of the Epidemiology module of the MPH1.

My name is Olivier Blanchard; I am the coordinator for the MPH1 module of Environmental Occupational Health Sciences. I am a teacher and a researcher in the Department of environmental health and health at work (DSET) in EHESP. My research concerns the health risk assessment of air pollution, ambient and indoor air quality. During the three weeks of classes I had the privilege to animate this module EOHS. With the help of professors who participated in the module's teaching, through the interventions and the exchanges with the students, we tried to give them the basic knowledge in environmental health and the keys of success for their future work. Finally, on behalf of the teachers of EOHS module, I would like to thank the students for their listening, their dynamism and their assiduous work during these three weeks. I wish them good luck for the rest of their careers.

BLANCHARD Olivier,
Environmental and Occupational
Health / MPH1



MODULES' COORDINATORS / MPH1

I am a biostatistics teacher and researcher from Biostatistics department (School of Public Health – EHESP in Rennes - France).

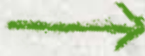
I coordinate a research project dealing with the role of environmental exposure and the social health inequalities.

I have been coordinating the biostats' track in the MPH1 program for 3 years, with a great pleasure.

Every year, it is a challenge for me to teach biostatistics to students from different cultures.

But the willing of the students to learn always more is very encouraging for a teacher!

A nice souvenir of this promotion!



DEGUEN Séverine
Information Systems
and Biostatistics / MPH1



HOBBS Suzanne

Introduction to Health Systems
and Policies / MPH1



My name is Suzanne (Sue) Hobbs, and I have the privilege and pleasure of being the new coordinator for the M1 track of the MPH program. I am a faculty member based in the U.S. in the Department of Health Policy and Management in the Gillings School of Global Public Health at the University of North Carolina at Chapel Hill. There I direct the doctoral program in health leadership (DrPH) and also teach health management and policy in the master's and doctoral programs. I am very excited about my affiliation with the EHESP and working with the school's talented and dedicated students, staff and faculty. The students I have been fortunate to meet are passionate about making a difference in the world. They are committed to establishing careers in which their good work will help greatly to improve the public's health. I am very happy to be a part of this excellent program and have great expectations for our students' success.

MODULES' COORDINATORS / MPH1

RAUDE Jocelyn
Social and Behavioral Sciences
in Public Health / MPH1



I am a lecturer of social and behavioral sciences in public health at EHESP School of Public Health for three years. These disciplines focus on identifying and analyzing the social and cognitive determinants of lifestyles and life conditions that are usually associated with public health problems, such as poor diet, addiction, alcoholism, smoking, sexual behaviors or domestic injuries, and using this knowledge to understand and promote healthy behaviors and environments within communities. I was previously social scientist at the Human Nutrition Department of the National Institute for Agricultural Research (INRA). My own research is about lay epidemiology and nutrition, i.e., I attempt to better understand the processes and schemes through which health and illnesses are understood and interpreted by laypeople. There are increasing evidences in the public health literature that these mental representations (beliefs, ideas, images, metaphors, perceptions, etc.) shape to a large extent the way individuals and groups cope with health threats.

As a professor at the AgroParisTech graduate school in Paris, and the Institut Nationale de Recherche Agronomique, my interests lie in the molecular epidemiology, genetics and pathogenesis of infectious diseases.

The module "Introduction to Life Sciences" gives me an opportunity to combine these interests with other facets of human biology, our place in the natural world, and factors in the environment which may affect our health.

The variety of educational backgrounds of the MPH students, their reactivity and their enthusiasm add to the quality of the teaching (and, I hope, learning) experience. As also noted by a number of the invited lecturers, it is indeed a pleasure to teach these students.

TINSLEY Colin
Introduction to Life Sciences / MPH1



MODULES' COORDINATORS / MPH1 & MPH2

FLAHAULT Antoine

Emerging and re-emerging infectious disease / MPH1 & MPH2



The emerging infectious disease (EID) module is taught with an interdisciplinary approach as part of EHESP's MPH at the end of the fourth semester for MPH2 and at the end of the second semester for MPH1.

It provides students with a theoretical basis, practical methods and principles of public health in various disciplines. The aim is to train students in processes of EID surveillance as well as in control and response tools. Whenever possible, it will be shown how each discipline contributes to the composition of knowledge necessary

I am Professor of Global Health at the EHESP. I have worked for the last 15 years with health issues in the most vulnerable populations in the developing world, first with MSF, later with Epicentre and now at the University of Oxford and EHESP. Trained as an epidemiologist, I am interested in the study of risk factors impacting the burden of disease of these populations. I have been very impressed with the curiosity of the EHESP students and their openness to the topics I have taught. The diversity of the group has greatly enriched the discussions.

to mount an appropriate and timely response to EID. Interdependence between disciplines will also be illustrated. This process-oriented approach will include disease surveillance, early warning and detection, study of trigger and risk factors, building scenarios helpful for action and prevention, epidemiological surveys, health and risk communication, as well as citizens' risk perception and behavior. The following disciplines are involved in this program: epidemiology and mathematical modelling, virology, immunology, public health, clinical study of infectious diseases, history, and sociology. It is a one week (i.e. 5 days) residential programme (3 ECTS, 30 hours), centered around a case study, drawn from the recent H1N1 pandemic outbreak. In 2011, EHESP has chosen to focus its IED MPH training program on the pandemic influenza outbreak which occurred all over the world and in which all participating Faculty were involved. It is a very didactic model to study, shedding light on potential future emerging disease scenarios. The training program will combine academic lectures, explaining methods and concepts, with their field application in the response and control of this particular EID, and will open further discussion about infectious diseases. Faculty are top international scientists with highly rated scientific production in the field.

GUERIN Philippe

Introduction to Global Health MPH1
Global and International Health MPH2



MODULES' COORDINATORS / MPH 2

DUCOS Régine
Humanitarian Health / MPH2



My name is Régine Ducos and I have recently become involved in the MPH program, where I am coordinating together with Philippe Guérin the humanitarian health track of the M2. Some words about my background: I have been working in international health for nearly fifteen years, after an initial training as pharmacist and an MBA in health management. The organizations I worked for include different NGOs, the UN and an international consulting firm. Most of the countries I worked in are in Eastern Europe, South-East Asia, and to a lesser extent in Africa. At EHESP, I have "two hats": I am in charge of EHESP's International Relations and co-directing EHESP's interdisciplinary research center on international and humanitarian health. It was a fascinating exercise to develop the humanitarian track modules together with enthusiastic colleagues, all having field experience in humanitarian and development work. Our objective is to offer to the students a broad range of practice-oriented humanitarian health topics, while combining theory, practical tools and the sharing of experience in humanitarian emergency and development settings. I have been very impressed with the high interest and active participation that the MPH students have demonstrated during the modules, as were my colleague lecturers. Some of the students had already work experience in the humanitarian field and could share valuable lessons with the group. Others went to do their internships of M2 in humanitarian settings, and their feedback will allow us to adjust the course content of the upcoming modules accordingly. It is a great pleasure for me to help students developing competencies in this important public health field.

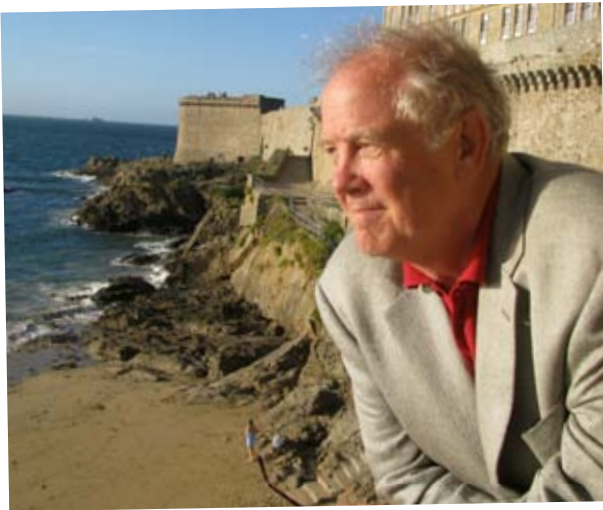
Jean-François Guégan, Ph.D. 1990 University of Montpellier (France), post-doc 1990-1991 in Great Britain, is currently Senior Research Director at the French Institute for Research in Developing Countries (I.R.D.) where he is leading a research group on Dynamics of Systems and Infectious Diseases. As an adjunct Professor at EHESP, he is responsible for the specialty track Environmental and Occupational Health Sciences from both the MPH and EuroPubHealth. During his lectures, he really enjoyed teaching major health issues associated with global environmental change, and also sharing experience with master students coming from all over the world on these issues.

GUEGAN Jean-François
Environmental and Occupational
Health / MPH2



MODULES' COORDINATORS / MPH2

RICKETTS Thomas
Management and Health Policy
Sciences / MPH2



I am a professor of health policy and management at the University of North Carolina at Chapel Hill and have been teaching for over 20 years. I have been trying to make the connection between the “policy” and the “management” components of the MPH program because they are so tightly linked in the real world of practice. I’ve been very impressed with the spirit of the EHESP, the very high quality of the students and the commitment of the faculty as we create a new degree program. I have learned far more than I have taught in the classes as so many of the students have valuable lessons to teach from their own experience. It is always a challenge to work across so many cultures and systems of health care, but the willingness to work together has been marvelous.

LE BIHAN Blanche
Social and Behavioral Sciences
in Public Health / MPH2



Phd in political science, I have been teaching at the EHESP for more than 10 years. My researches question the notion of “Social Care” by investigating both public policies and care practices within families in France. Comparing the situations in different countries is for me essential and my work concern France, but also Europe and more recently Canada and US. I am particularly interested in Long term care towards Elderly people, Alzheimer Disease. As a researcher, it is very important for me to have the opportunity to teach what I understand of these issues. Teaching to students from different parts of the world is in this sense a great opportunity.

MODULES' COORDINATORS / MPH2



Dr. Moïse Desvarieux is an epidemiologist who studies the interface between infections, inflammation and chronic disease. He is a jointly appointed professor at Columbia University Mailman School of Public Health and EHESP. Over the last 10 years, his research had led to the clarifying of the relationship between chronic oral infections and cardiovascular disease both in the US and in Europe, as PI of large international consortia. In 2005, he was awarded a Chair of Excellence by the French National Agency for Research in collaboration with Inserm to coordinate the study of oral infections and vascular disease in the 5 collaborative cohorts of INVEST in the US, SHIP in Germany, PRIME in Ireland, HAPIEE in Poland and HEALS in Bangladesh (later added). He also received the “Leadership in Research” award from the Friends of the National Institute of Dental and Craniofacial Research at the National Press Club in Washington for “outstanding scientific contribution”. A founding and former Director of the Department of Epidemiology at EHESP, Dr. Desvarieux also created the Doctoral Programs of the School and now heads the Epidemiology MPH program. His research on chronic disease is carried on both continents as Head of the Chronic Disease Initiative at Mailman and the EHESP Chair in Chronic Disease at EHESP. In 2010, Dr. Desvarieux was honored by Columbia University by receiving the Mailman Dean’s Leadership Award, to recognize his “great vision” for “true international collaboration on an academic as well as on a research level”, and “highlighting his pivotal role in the School’s recent ground-breaking partnership with the École des Hautes Études en Santé Publique (EHESP)”.

MPH ADMINISTRATION TEAM

Coming first as a human sciences student from Germany in 2000 I worked for different institutions in social and professional integration, trainings and also like a German language professor for supervisors of commercial companies.

With some experiences in the social management in both countries I entered EHESP in 2010.

Since April I'm working in Rennes for the Master of Public Health.

Here I'm supervising the financial and logistic aspects for the teaching staff and I organize the program. Communicate with the international teaching staff is a pleasure for me.

GRAPENTHIN Anke
Programme's Coordinator



LANGLAIS-VIGNON Lucie
Students' Coordinator



Graduated with a Master of Politics Sciences in 2007, I later lived in Chicago (USA) for one year. Coming back from the United-States, I worked in an art gallery for a few months and then entered EHESP in 2010.

I'm taking care of MPH students in Reid Hall campus (Paris) and try to do everything I can to make their lives in Paris comfortable.

It is a pleasure for me to meet these very interesting students!

PHIN ASSOCIATION EXECUTIVE BOARD



Members from left to right:
Rebecca Donnelly (Class representative),
Zach Ward (President), Sharon Koenen
(Treasurer), Claire Bellia (Secretary).

The Public Health International Network (PHIN) is a student-led association that supports graduate students of public health at the École des Hautes Études en Santé Publique (EHESP) in achieving their academic and professional goals. As an association committed to student diversity, we thrive on the variety of cultural, academic and professional backgrounds of our students. We work towards enlarging our international network of graduate students and professional practitioners dedicated to public health initiatives in France and abroad.

Our main goal is to improve the understanding of health problems, explore the etiology of population health disparities and critically examine health protection approaches through knowledge exchanges and scientific information sharing. As such, we are committed to support student-led initiatives that advance the democratization of health knowledge, encourage sustainable capacity-building within communities and empower women and men alike to engage proactively in the protection and maintenance of health.

Lucia Isabel Fiestas Navarette,
PHIN 2011 President



Members from left to right:
Thibaut Koutangni (Secretary),
Anita Tormos (Class representative),
Michael Mireku Osei (Board member),
Lucia Isabel Fiestas Navarette (President),
Jean-Baptiste Hazo (Treasurer),
Mahal Woldetsadik (Board member).

Questions:

1. Where do you see yourself in 5 years (professionally/geographically)?
2. What was the biggest surprise about moving to Paris?
3. Why are you interested in public health?
4. What is your favourite EHESP memory?
5. What was your funniest meter/shop/sidewalk experience in Paris?
6. What is your favourite arrondissement/area in Paris and why?
7. Why did you choose this VPIH?
8. What is your favourite restaurant in Paris and why?
9. What do you consider your biggest achievement in the VPIH?
10. What song do you think best describes the EHESP? (Title/Artist)
11. In 3 words, how would you describe your average school day?
12. What is your favorite 'free time' activity in Paris?
13. What is the most important life lesson you have learned?
14. What is one thing you will miss about Paris (if you're leaving)?
15. What was the most inspirational moment for you during this VPIH?

MPH 2



AL-KHAFAJI Ali

Baghdad, Iraq
Concentration: Epidemiology

- 2. Kids speak fluently French.
- 3. As a doctor you can help one patient at a time, as a public health professional you can help a population at a time.
- 8. Pakistani restaurant in the 10th, because it's cheap, spicy and that's where my friends like to eat.
- 11. Surprise... surprise... surprise !
- 14. The bridges.

Ali.Alkhafaji@eleve.ehesp.fr



BELLIA
Claire

Malta



6. Montmartre. It is where I was lucky enough to find my little home here in Paris. I love all the narrow cobbled roads, the Place du Tertre in Christmas when the lights are up, and the apartment buildings that don't seem to be built straight.

7. It seemed like a dynamic Master programme, with an international scene and good exposure to lecturers from all field of Public Health. Also, because I love this city.

8. Les fous de L'isle on Ile St. Louis. It has brilliant dishes which are continuously changing, has a nice, warm atmosphere and is rather quirky.

12. Eating a Falafel while wandering around the Marais on a Sunday watching all the Chic Parisians go by. Then heading off to a museum or exhibit at any of the wonderful museums.

14. My friends, the little family I have here, and the croissants of course!

Claire.Bellia@eleve.ehesp.fr



BEROSSA
Estifanos Debebe
Ethiopia

Estifanos.Berossa@eleve.ehesp.fr

MPH
2

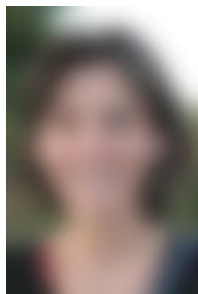


BITFOI Adina Maria
Bucharest, Romania
Concentration: Epidemiology



- 1. That's just it, after this experience I can see myself free to be anywhere, able to do anything!
- 4. The great people I've met here who've become friends in no time! This is a memory for life!
- 6. Sacré-Cœur and Montmartre – feeling like I'm on top of the world!
- 13. There are geographical borders just on the map, not within people!

Adinamaria.Bitfoi@eleve.ehesp.tfr



CANTITIEAU
Caroline
Paris, France

Caroline.Cantiteau@eleve.ehesp.fr



CHECK-ABDOULA
Nassima
Paris, France

Nassima.Checkabdoula@eleve.ehesp.fr



DARLINGTON

Meryl

London, UK

Concentration:
Epidemiology



1. Health Economist in Paris, London or Wellington. Or Epidemiologist investigating outbreaks on a remote warm Pacific Island.

3. Making the best of limited funds available to make a difference to people's lives and having rigorous arguments at my fingertips to denounce the pharmaceutical industry!

7. For its International aspect and the chance to have a French diploma whilst studying in my native language.

12. After spending time with my children probably playing chamber music with my husband and friends.

Meryl.Darlington@eleve.ehesp.fr



DONNELLY

Rebecca

Swift curennt, Canada

3. I've always been passionate about working with people. My experience in mental health has helped me to see how public health initiatives can make differences in people's lives and in society as a whole.

4. Oh my gosh- it's just too hard to pick only one! Every pot-luck, fund-raiser, ping-pong game, coffee-break or lunch when we all got together and shared laughter, good food and fun! Love you all!

6. Barbès is full of life, energy and culture and is always bustling! It leads into Montmartre where walking around winding streets reminds me of why I've fallen in love with Paris.

Rebecca.Donnelly@eleve.ehesp.fr



MPH
2



DURIEZ
Guillaume
Paris, France

1. I see myself working as a hospital director, whether in France or abroad. If I work abroad, I would like to get involved in health-related projects in developing countries .

3. Because I think that's a field in which it's easy to find real sense in your work

4. The lunch offered by Muslim students for the end of the Ramadan. Such a great surprise!

7. Because it was located in Paris, was taught in English and stayed rather general (I didn't need any concentration).

11. Trotinette, conference room, restau U.

12. Playing tennis.

14. Museums and exhibitions People smiling in the tube (or not).

Guillaume.Duriez@eleve.ehesp.fr



EL KHOURY May
Paris, France

1. Still don't know...

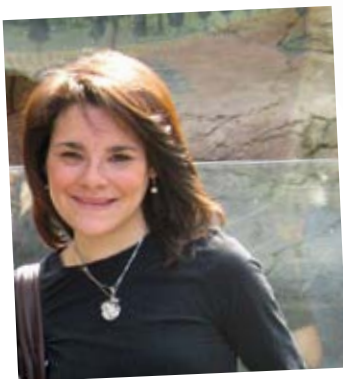
2. No surprise since I already live in Paris!

3. I'm interested in Health in general, and Public Health is a way for me to help people getting better health.

6. 6th and 5th arrondissement because they are very touristic.

8. Le relais de l'entrecôte because they serve an excellent entrecôte with their special sauce.

May.Elkhoury@eleve.fr



ENGLAND Rachael
Roaring Spring, PA, USA

1. It is a subject broad enough to feel like the possibilities are limitless, yet focused enough to avoid feeling overwhelmed by options.

2. I think I've discovered what's to love and hate about each arrondissement of Paris, but my favorite is the 9th! The 9th contains elements of every part of Paris – the unapologetic hedonism of Pigalle, teeny, charming little shops and restos lining the Rue des Martyrs, the glitz of Printemps, Galeries

Lafayette, or Opera Garnier, and of course Kooka Boora, my favorite café in all of Paris! Le neuvieme, je t'aime!

3. I just chose the school with the longest name.

4. Coffee, lunchtime, powerpoints.

5. Definitely anything involving a body of water, bottles of wine, fromage & baguette, and a few friends!

Rachael.England@eleve.ehesp.fr



FAKHA Amal

Lebanon, Lyban

Concentration:
Management and
Health Policy



- 4. Having multicultural class members.
- 5. Busy, tiring, rich.
- 6. Seine & Pont Neuf
- 7. I wanted to move and live in Paris.
- 8. Pain, Vin & Fromage. They have best raclette and fondue.
- 9. Getting this degree from a well known university in Europe and being exposed to a multicultural environment as well as gaining a great experience.
- 10. Jogging.
- 11. To travel a lot and get exposed as much as I can.
- 12. The beautiful city of Paris.
- 13. Some professors were really amazing and gave us rich knowledge and many inspirations for our future careers.

Amal.Fakha@eleve.ehesp.fr



GARCHITOREN-GARCIA Andres

Madrid, Spain

Concentration:
Environmental Health

- 1. I see myself working anywhere in the world, in some public health related topic. In other words, I have absolutely no idea...
- 2. Because I think it's a really meaningful profession.
- 3. Walk around the city and enjoy its beauty.

Andres.Garchitoren@eleve.ehesp.fr



- 1. A very good and well experienced public health professional in anywhere in Europe.
- 2. Living and studying in Paris which is the most beautiful city of the world.

Romana.Haneef@eleve.ehesp.fr



HANEEF Romana

Pakistan



HEWISON Catherine
England

Catherine.Hewison@eleve.ehesp.fr



KARKI
Kshitij
Hetauda, Nepal
Concentration:
Environnement
Occupational

1. I would like to be in developing countries.
2. Dreams come true.
3. I would like to be involved in social services and public health is the art and science which is important for the promotion, prevention and management of health of people as well as research.
4. Well coordinated and quality lectures.
7. My interest is securing a public health education.
9. Knowledge on environment and occupational health.
12. Museum Visits.
13. We are in a small world and climate change affects everywhere, whether the destruction of ecosystem in one place or other.
14. Metro.

Kshitij.Karki@eleve.ehesp.fr



MPH
2



KENNELLY
JESSIE
London, UK

1. I would like to be working in Europe for an international organisation, hopefully with lots of travelling under my belt.
2. Coming into such a great group of people, from day one, not feeling lonely.

4. 1)For so many reasons; Estifanos Berossa 2) Coffee stealing 3)Hotpants 4)Boys who dance 5)'60% French is English anyway' 6)'Spices' 7) A group of international students who came together from all over the world and found all the same things funny. 7)'Can someone please teach him the word 'air' it's probably the most important word in his career'.... MPH student commenting on an Environmental Lecture.

7. For a once in a life-time opportunity to live in Paris as a young care-free student.

10. The International Language of Screaming - Super Furry Animals.
11. Laughter Confusion Powerpoints.

Jessie.Kennelly@eleve.ehesp.fr



lololo

- 1. I would love to dabble with peace through health. I will be working in Kashmir and hopefully it will be peaceful.
- 2. Paris is a surprise in itself. The more you discover it, the less you understand it.
- 3. I can reach out to the unknown.
- 13. I know more than I thought I knew.
- 14. An effective public transport system.

Asif.Khan@eleve.ehesp.fr



KHAN Asif Hameed
Srinagar, Kashmir

- 1. The 12 meter square rooms which includes kitchen, bat and bed which will be your home during your stay in paris if you are extremely lucky and you found it.
- 2. I Like SHEZAN Resturant located in 10 arrondissement of Paris, They offer traditional Pakistani food and have variety of spicy food items. I like it as I like to eat spicy food and it is inexpensive, if you are planning for a dinner with Friends or Family it reasonable place and less expensive. Don't miss to eat Nan fromage and Biryani.
- 3. I use to walk different places in Paris to explore the hidden rich history and beauty of Paris.

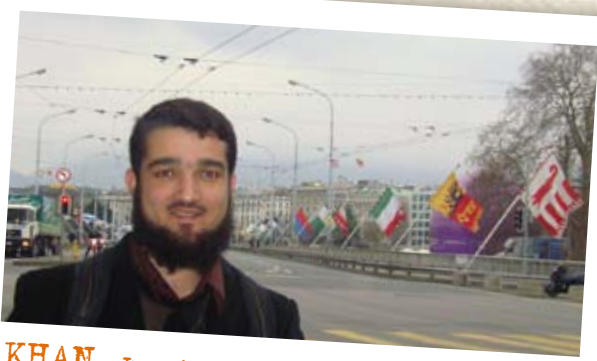
Junaidiqbal.Khan@eleve.ehesp.fr



KHIREDDINE
Imane
Algeria

- 1. Meeting such interesting people and discovering Paris cultural life.
- 2. I think that, for a physician understanding epidemiology and research tools is as important as clinical practice.
- 3. The first week spent at Rennes
- 4. Les Champs Elysees for obvious reasons.
- 5. The 6th district, because I love "le Jardin du Luxembourg"

Imane.Khireddine@eleve.ehesp.fr



KHAN Junaid Iqbal
Peshawar, Pakistan

MPH
2



KOENEN

Sharon

Netherlands

Sharon.Koeneny@eleve.ehesp.fr

MPH
2



LYONNARD

Julie

Paris, France

1. Getting used to the awful weather.
2. Graduation ceremony for the MPH2 students last year... a lot of emotion and fun for all of us.
3. The 3rd one for its nightlife and the Barav (6 rue Charles François Dupuis).
4. A very typical French habit: drinking, chatting and socializing with friends.
5. The Global Health Week.

Julie.Lyonnard@eleve.ehesp.fr



MAKOVSKI

Tatjana

Bosnia and Herzegovina

4. My EHESP friends!
6. Notre Dame, just love it!
11. Isn't it cold!?
12. Just to wander around.

Tatjana.Makovski@eleve.ehesp.fr



MALIK

Farrukh Javaid

Pakistan

2. More people spoke English in 2010 compared to my last visit 6 years ago.
4. Week in RENNES during RAMADAN.
5. Once it took me 3 hours to get to school during the 2010 train strikes. I could have easily been living in Brussels and would have reached quicker on the TGV.
13. Treasure whatever you have.

Malik.Farrukh@eleve.ehesp.fr





MASSON Sophie

Paris, France

Sophie.Masson@eleve.ehesp.fr

MLINGANIZA

Elsie

Lilongwe, Malawi

Concentration:
Environnement/
Occupational



1. I will be somewhere working in the Public Health field or doing a PhD, far away from Europe.
2. I thought I would be lost in Paris for the fact that I don't speak in French, however I found the French to be friendly and helpful.
3. Because it promotes the health of human beings. Looking at the new challenges to human life coming up as a result of global development and climate change, I think Public health is the best approach for effectiveness of interventions to tackle such issues.
6. 19th arrondissement because that is where I spent my first five months in Paris.
7. I chose this MPH because it is offered in English, it is in Paris and it is international with international lecturers and students.

Elsie.Mlinganiza@eleve.ehesp.fr



NGUYEN Huyen Thanh

Hanoi, Vietnam

Concentration:
Environnement/ Occupational

2. Frequency of "grève" and a lot of "musée".
6. Cannot tell which one is the most favourite, but I love 75006 because it is so posh :P, and the 13th arrondissement for its Asian gastronomic restaurants.
11. Intensive, tired, and of course... sleepy.
12. Visiting "musée"!
14. Reid Hall for sure.

Huyenthanh.Nuguyen@eleve.ehesp.fr

MPH
2





OKASHA

Omar

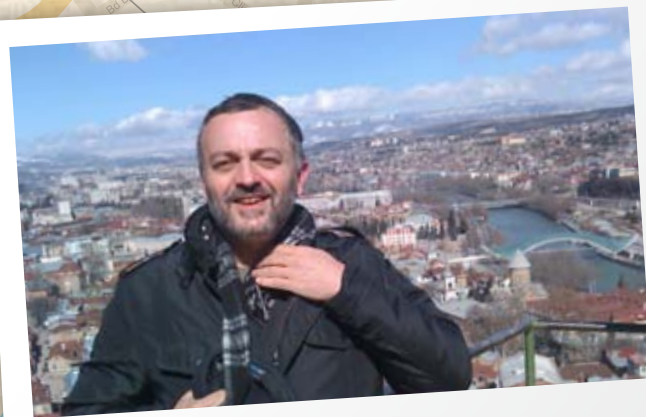
Caire, Egypt

1. Assistant director, World Health Organization, EMRO.
2. The size of my studio.
3. Make a real change in the real world.
4. Reid Hall.
5. Unfortunately, I did not have time for such experiences.
6. The 7th, because it reminds me of downtown Cairo.
7. By recommendation of my supervisor at Institut Pasteur .
8. All the Indian restaurants around St.Saint Denis, especially vegetable dishes.

9. Having new good friends.
10. Another brick in the wall/Pink Floyd.
11. Life is unpredictable.
12. Going out, having a nice walk, eat some delicious French Patisserie, take the Vélib and cruise around, walk in the lavish shopping areas, watch the beauty of Paris day and night.
13. One cannot say what he learned, it can only be done.
14. My friends.
15. I am waiting for it.

Omar.Okasha@eleve.ehesp.fr

MPH
2

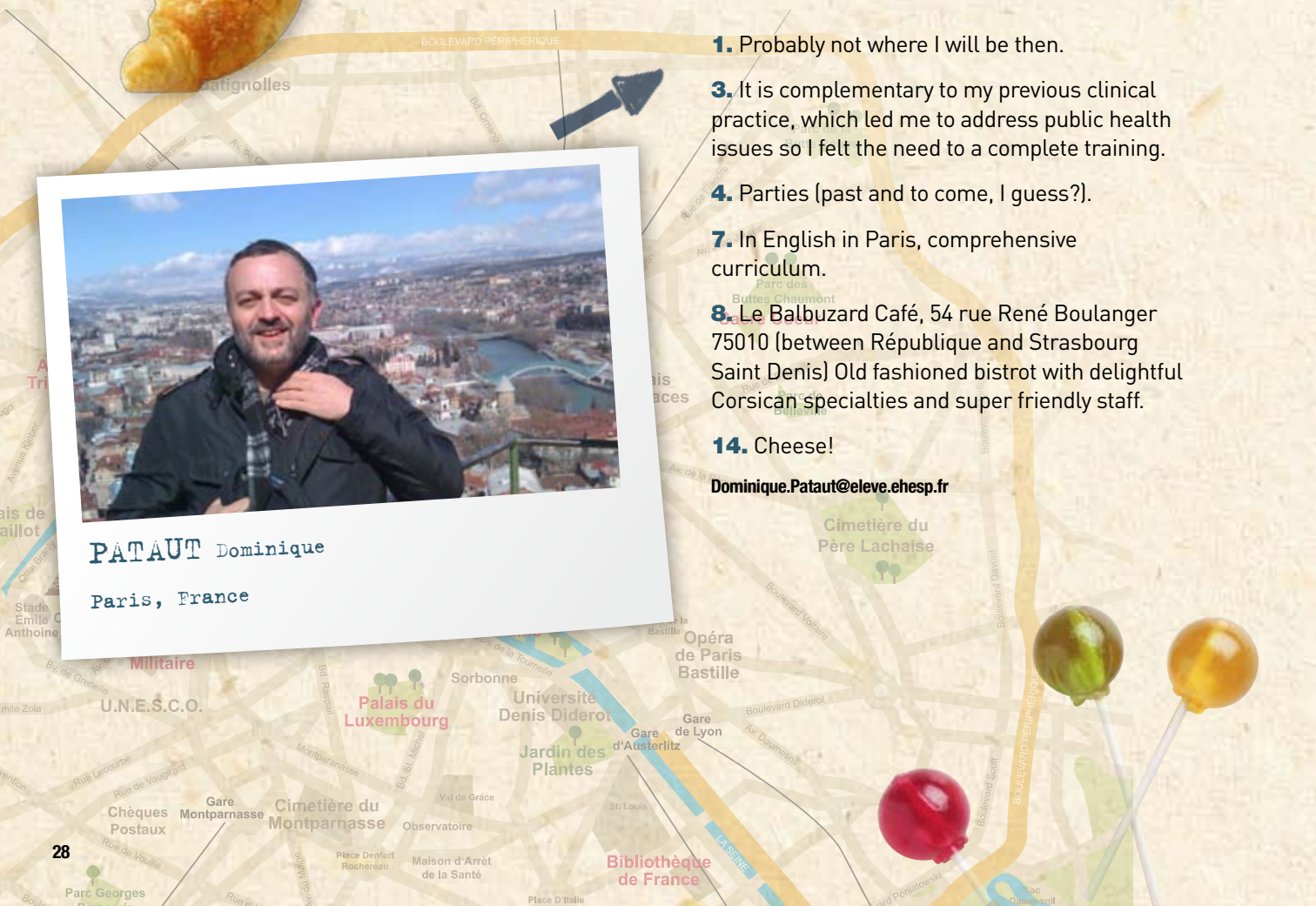


PATAUT Dominique

Paris, France

1. Probably not where I will be then.
3. It is complementary to my previous clinical practice, which led me to address public health issues so I felt the need to a complete training.
4. Parties (past and to come, I guess?).
7. In English in Paris, comprehensive curriculum.
8. Le Balbuzard Café, 54 rue René Boulanger 75010 (between République and Strasbourg Saint Denis) Old fashioned bistrot with delightful Corsican specialties and super friendly staff.
14. Cheese!

Dominique.Pataut@eleve.ehesp.fr





PRAJAPATI

Raju

Bhaktapur, Nepal

2. Coming into Paris is just like dream coming true.

3. As a student, I always had a dream to serve poor and sick people. As Public health deals with different facets of determinants of health, I decided to join Bachelors degree in Public Health in my home country. After my undergraduate, I was working in the sector of community based child health programme. While working, I felt that I lack something which could be fulfilled by pursuing higher specialities. This was how I applied for the course.

9. Lectures delivered by the professors from all over the world and the students from across the world.

10. Country road, take me home... /John Denver.

12. Roaming around with friends and watching movies.

14. The beauty of city and the Eiffel Tower.

Raju.Prajapati@eleve.ehesp.fr



RAHMALIA

Annisa

Bandung, Indonesia

Concentration:
Environnement/
Occupational

2. Well... I know that people will speak French, I've been warned that rooms are expensive and hard to find, and that the metro stations stink. What struck me as a surprise is that arrow down means forward and arrow up means back. That's sort of counter-intuitive...

3. My previous degree is in medicine. My first job was in a clinic for internally displaced people in Aceh after the tsunami.

My feeling was that they have greater need than what we could facilitate through the clinic, and that was pretty much how I realized that I'd be more content doing public health stuff.

13. "There is no good model, but some are useful."

14. The "Whoa, I live in Paris!" moments that come from time to time.

Annisa.Rahmalia@eleve.ehesp.fr



RAINERI Cristina

Italy

Raineri.Christina@eleve.ehesp.fr

MPH
2



- 1.** I see myself in Brussels, London, or Eastern Europe working on policy issues related to Public Health in Eastern Europe, European Union migration issues, or Aid policy to Eastern European and Central Asian countries.
- 2.** I've been most surprised by the fact that I never tire of croissants.
- 3.** I'm interested in social justice issues and how public health is intertwined with social inequities. The intersectoral nature of a country's health system, educational system, and infrastructure are what ultimately brought me to pursuing an MPH.

- 8.** Cafe O'Jules... It's a simple Brasserie, but the waiters are always nice!
- 9.** 'In' the MPH I consider my greatest achievement to (presumably) graduate. 'During' the MPH, I'm proud that I learned a bit of French.
- 11.** 6 hours long.
- 12.** Walking in a city that always surprises.
- 13.** In every situation you can adjust your lens to make what you're looking at a bit more rosy, or just look in the other direction to see what else is good around you. It's all what you choose to hold in perspective.

Kieran.Rooney@eleve.ehesp.fr



MPH 2



- 2.** Housing issues!
- 6.** Le Canal St. Martin.
- 7.** I chose this program because of its international students, faculty, and setting...and because I missed France.
- 8.** My favorite restaurant is Cafe du Rendez-Vous at Denfert-Rochereau because I spent about 50% of my time in Paris working there.

Adrianna.Saada@eleve.ehesp.fr





SHIN Sarah

USA

- 1.** Not the biggest surprise but a positive one was how friendly and helpful the customer service agents always are at the Post Office.
- 2.** Getting to know lots of new and interesting people I would have never met otherwise, and all the class picnics in the jardins and parcs around Paris.
- 3.** The Marais since it has a relaxed neighborhood feel, lots of cute shops and storefronts, and L'As du Falafel.
- 4.** Walking through all the different neighborhoods of Paris eating pains au chocolat, baguettes and macarons along the way, visiting free museums, going to Monoprix, running along the Seine on Sundays when the berges are closed to car traffic.

Sarah.Shin@eleve.ehesp.fr



SLAMA

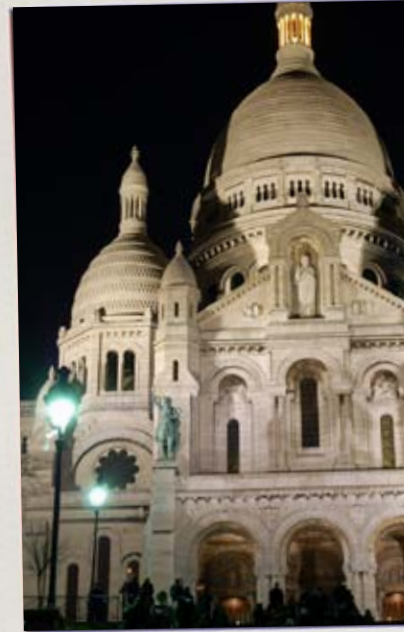
Katia

Paris, France

- 1.** In El Salvador, struggling to deal with all the problems with an ongoing epidemiological study
- 2.** So much time spent in the subway!!!!
- 7.** To study in English and meet (great) people from all around
- 8.** La marmite in the 18th arrondissement, great (not so healthy) salads and not far from the Sacré-Coeur, with a nice view of Paris. Fun to do one after the other.

Katia.Slama@eleve.ehesp.fr

MPH
2



MPH 2



TAL Sean
Kuopio, Finland
San Francisco, USA

1. Finished with my PhD, Location: Where ever Life takes me.
2. How long it took to find a place to live.
3. Peace through Health.
4. Everyone I met.
5. At Masion De Exams I was called a Paris Street walker.
6. 14th its where I lived Cité.
7. Because it is in Paris and to learn Pubic Health out side of my Uni.
8. Chez Junaid.
9. Passing exams (I haven't had exams in the past 4 years).
11. RER, Power Point, RER.
12. Hanging out anywhere in Paris with good friends, a bottle of wine and a baguette.
13. Patients.
14. My friends.
15. How everyone supported me through my tough times.

Sean.Tal@eleve.ehesp.fr

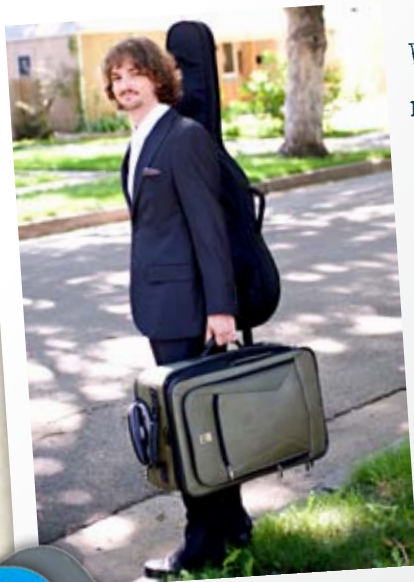


1. It's inspiring, engaging and it enables me to do what I love.
2. Lovely students and staff, beautiful Reid Hall in the heart of Paris.
3. There are so many nice areas and places to enjoy. Still, I will stay traditional and say that Eiffel tour is magical. Everyone should see it!
4. Any song sung by Martine Bellanger.

Tijana.Topalovic@eleve.ehesp.fr



TOPALOVIC
Tijana
Belgrade, Serbia



WARD Zachary
Nairobi, Kenya
Concentration:
Epidemiology

- 1. Back in the field developing research/management tools and software.
- 4. Class parties/international buffets.
- 6. Probably the Parc Floral – a great place to have a picnic and listen to live music outdoors!
- 14. Friends that became like family. Also, affordable gourmandism!

Zachary.Ward@eleve.ehesp.fr



MPH 2

- 2. It's not quite the same as the movies!
- 3. It affects everyone in the world.
- 4. Being with people from all over the world every day.
- 7. I was already living in Paris and wanted to study in English. This is the only PH course in Paris at present.
- 11. Interesting, inspiring, sometimes random.
- 12. Walking around looking at Paris.

Judith.Wolff@eleve.ehesp.fr



WOLFF Judith
England
Concentration: Humanitarian



MPH
↑



AKINDELE
Marusa Omowunmi
Lagos, Nigeria

- 1.** I see myself as a Public health physician and Medical Doctor collaborating with the Government of my country to improving the health care system and health status of the citizens in Nigeria.
- 2.** The extent of solidarity the society operates in, especially in making life affordable and interesting for students through the numerous student discounts made available.
- 3.** Burdened by the immense deficiency in the health care system and I felt the need to get involved on

- a larger scale and not just a Doctor in my community.
- 4.** The first week at Rennes. We were given a warm reception and were well taken care of. It sure was a memorable experience.
- 7.** The rich diversity of culture and professional experience the school affords.
- 11.** Classes, chitchat during lunch break, more classes.
- 12.** Watching movies.

Marusa.Akindele@eleve.ehesp.fr



AL-KHAFAJI
Mohammed
Baghdad, Iraq

- 1.** The fact that what learned about French language in high school is only the first step to start learn French.
- 2.** The fact that they don't like to speak English even if they know how.
- 4.** PUBLIC HEALTH PICNICS by the river, Estifanos, special moments, the feeling that we are just a big lovely family.

- 6.** Saint-Micheal area... why ??? Go there & you will know!
- 8.** Junaid Khan Restaurant for a simple reason (he is a 5 star Chef).
- 11.** Tired, Finally its 12, A demain.
- 12.** Holding my camera and taking a million of pictures of different things.

Mohammed.Alkhafaji@eleve.ehesp.fr



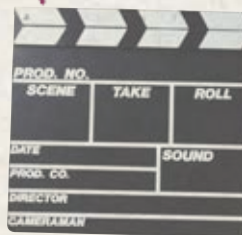
2. That Velib is the answer to (almost) every question during strikes.

5. Going to Anita's costume party on the RER with Ali (dressed in Iraqi traditional costume), Asif (dressed in Kashmiri traditional costume) and Sean (aka Castro, with his pockets full of Cuban cigars) during the terror threats in Paris.

11. Running from Port Royal to Reid Hall (because I am always late, not because I appreciate free exercise in the morning), Cafe Long avec sucre, Laughs.

15. When, after hours of battle and endless frustration, STATA finally decided to cooperate. Shows that nothing is impossible, as long as you add some persistence and patience.

Ane.Auraaen@eleve.ehesp.fr



1. Good question! I wish I could be in Paris working in a Public Health organization or NGO, or maybe in South America, working for... WHO?

2. So many things to do, and Parisians are sometimes not very nice...but this is not a surprise!

3. Because Public Health is everywhere. I want to understand better this subject to be able to participate in the creation of good public health policies or to develop projects in the field of health in developing countries.

4. In this MPH, I like the fact that most of the people are very committed to what we are studying: people stay after class, trying to explain to each other, or talking about subjects that they like. There is a real commitment and solidarity that I haven't experienced in my previous university.

5. Hum... We were on the metro, coming back from a trip out of Paris with some of the MPH students, and I was talking, very tired from the weekend, and I just fell on the ground on the middle of everybody... was ridiculous but funny!

7. I chose this MPH for several reasons: it is in English, with students from all over the world, in Paris... and above all because the courses seemed very interesting.

8. There are so many...and we are students so it is hard to try them all and find one favorite!

9. The fact of being able to understand quite a lot in Public Health after a few months, even though my background is not medical at all.

11. In one word: intense!

12. Cinema, concerts, bars and restaurants!

14. I guess I am here for some more time!

Justine.Bettinger@eleve.ehesp.fr

MPH
↑

MPH 1



DEMISSIE
Midekssa Guta

Ethiopia

1. I am always optimistic person. When I was too young, I used to say "I will go abroad and study my education". Certainly, even if my motivation did not get acceptance during that time, praise be to God, I have been studying Public health, in EHESP, here in Paris, in the most beautiful city. In similar fashion, I do have personal and worldwide visions which I want to see in the next five years. One of my strongest commitment and believe is to bring a tangible and radical change in to my poorest country Ethiopia using the knowledge I have been getting from my school.

CAPOBIANCO

Chiara

Italy



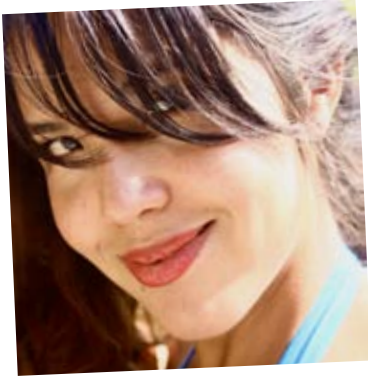
Chiara.Capobianco@eleve.ehesp.fr

2. I have moved to Paris, generally speaking, to abroad for the first time and I am surprising at every event. Honestly speaking everything in Paris are new for me as compared to my country. In fact, I was surprised more in Metro transportation of Paris. The speed and the way it was built is, really, amazing for me. In my country there is only ONE rail way with the slowest speed even than car. In reverse way, I think, it amazes someone from developed world.

7. I chose MPH. Due to that fact that I believe that Public health is everything. It touches the life from every corner. I am veterinarian and have best knowledge on health of animals. Somehow, I lack the knowledge of public aspects. Hence, I need to have basic knowledge of public health. Then, I want give focus for further study of the diseases that transmit from animals to human (zoonotic diseases like TB, rabies, anthrax, brucellosis, Bird flu or any other diseases) and vice versa.

Midekssa.Demissieguta@eleve.ehesp.fr





FIESTAS-NAVARRETE

Lucia Isabel

Peru & Canada

1. I see myself co-creating positive spaces with women and transwomen survivors of gendered violence and leading community-based research aimed at translating female experiences of violence into destigmatizing discourses, thereby, fostering greater understanding of the dynamics of violence against women and of the factors determining vulnerability to violence.

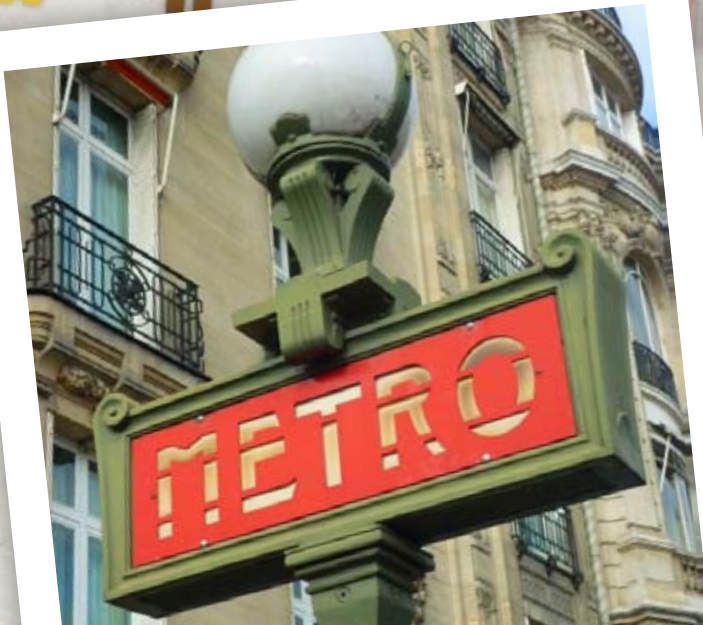
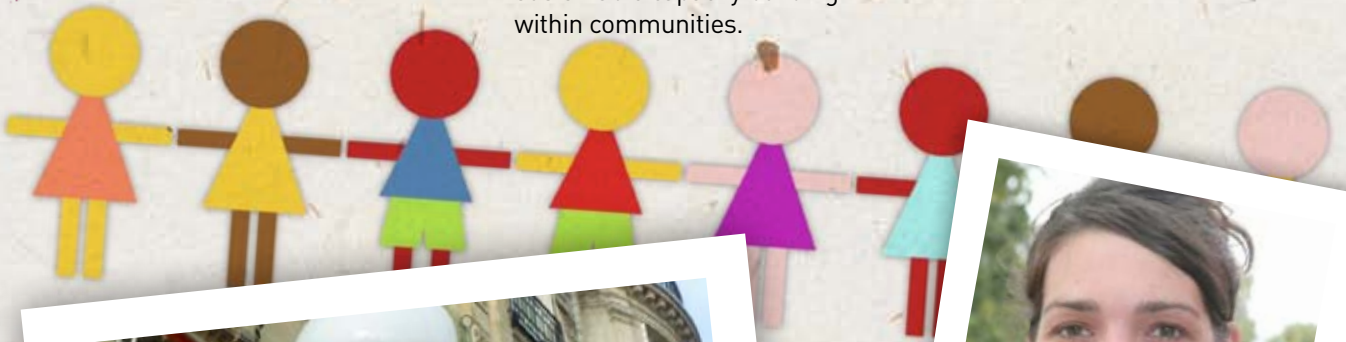
2. I am convinced that the field of public health is a powerful platform for social change and believe that the advancement of population health is inextricably connected to our commitment to far-reaching social objectives. I want to continue to lead initiatives that advance the democratization of health knowledge and encourage sustainable capacity building within communities.

3. Challenging, Inspiring, Forward-thinking

4. We must be willing to tell the truth while acknowledging that the condition of truth is to allow suffering to speak. There is no serious talk or engagement with the truth about our lives, individually, collectively, nationally or globally without allowing suffering to speak. Allowing the voices of all the priceless and precious ones to be heard, no matter what color, no matter what civilization and sexual orientation, so that their wounds and their scars and bruises can be transformed. So, the fundamental question is: when confronted with truth, what kind of human being will you choose to be? (Cornel West, 2010)

Lucia.Fiestanavarrete@eleve.ehesp.fr

MPH 1



GAYRARD Carine

France

Carine.Gayrard@eleve.ehesp.fr



GUERRISI

Caroline

Paris, France

1. I don't really know... But I have in mind, for years, to go to Canada and work there for a little while. In fact they are "pioneers" in term of public health, and I would like to improve my skills and knowledge there. Concerning my job, I am not sure but for instance I would try to combine my initial training which was Human Nutrition and the Epidemiology field.

2. I thought it would have been harder for me to live in a city like Paris as I am a "provincial"! Actually it is not so bad!

3. "Health is a state of complete physical, mental and social well-being and not merely the absence of disease or infirmity." (WHO, 1946) It is important to have in mind that being in good health does not represent the remedial part only. People often forget that and focus on the curative part rather on the prevention, which is as much as important not to say more important than the curative aspect. Briefly that is the reason why I am interested in public health.

4. The Christmas party.

6. I don't know if it is because I am living there but I like the 14th arrondissement very much, with its theaters, cinemas, flea markets...

7. I chose this MPH after my bachelor's degree because the first year takes into account all the fields of public health

and I was not ready to choose a speciality because I was not aware of all of them. Moreover as the MPH is an international track I thought that this experience would have been rewarding for me!

8. I don't have a favourite restaurant, but if you want to eat Korean, Japanese or even Chinese, you can go "rue Saint-Anne, metro Pyramide, 2nd arrondissement". They are a lot of small Asiatic restaurants: the food is really good and cheap!

9. To prepare at least 3 English presentations in a week!

12. I like visiting Paris by foot, especially places where they are not so many tourists, so not necessarily famous places.

13. Group's works help me to be more attentive to the others and their ideas; to be more open-minded.

14. The cultural side of the city.

Caroline.Guerrisi@eleve.ehesp.fr



HAZO

Jean-Baptiste

Paris, France

1. Paris, Berlin, London, NY, Bruxelles planning health policy for a public institution.

3. Because it deals with preservation of life, the most important thing for me.

7. For the diversity of students inside.

14. The bread (and food in general) and the diversity.

Jeanbaptiste.Hazo@eleve.ehesp.fr



KOUTANGNI Thibaut

Benin

1. In five years I would like to be preparing my PhD in epidemiology.
2. My biggest surprise about moving to Paris was that I didn't imagine that I would meet so very nice fellows in the MPH program.
3. Epidemiology and evaluation of public health programs
7. Because I wish to work in the public health domain and to have an international career.
13. Your future life is determined by what you think about it in the present.
14. Paris is a very beautiful town.

Thibaut.Koutangni@eleve.ehesp.fr



MIREKU
Michael Osei
Accra, Ghana

1. I find myself pursuing a PhD programme in Public Health (In a chosen Major) in the United States of America.
3. To broaden my scope of public health issues in the delivery of health care service, management of public health and health policy so that I would be of service to my country, Ghana, and the world as a whole.
7. Aside the foreign exposure, the expectation of quality tuition and the opportunity to study in English in France was what made me choose this particular MPH.
10. Glory – Kanye West.
11. Lovely and Tiring.
12. Visiting the pub with friends.

Michael.Mireku@eleve.ehesp.fr



RAMEL Viviane

France

Viviane.Ramel@eleve.ehesp.fr

MPH
1



RIJAL Nished

Dharan, Nepal

1. I see myself working in some NGO or government institutions in rural part of my country.

2. This is the first time that I have out of my country so everything is full of surprises.

3. I had my background in public health, so I wanted to do further specialization in this field. Public health is the mixture of all relevant issues and it is especially important for my career as I have noticed that there is a huge shortage of manpower working in the field of preventive health in my country.

4. Friends from every corner of the world.

7. Due to the variability of professors and students from all over the world and to learn public health practice in developed country.

8. Le Himalayan - you will get Nepali foods.

9. Friends and learning in completely new perspective.

Nished.Rijal@eleve.ehesp.fr



STUEWE

Louisa

Hamburg, Germany

1. In some big city, with my boyfriend, and a public health related job that is satisfying me (project management).

2. That it is not as glamorous and romantic as I would have expected it to be. Paris is actually very hectic and you have to find your own way to be happy here. On the other hand, it gets never boring in Paris, be it day or night, and there is a bunch of things to explore.

Louisa.Stuewe@eleve.ehesp.fr



TELLILLA RAGA
Mitiku

ADDIS Ababa, Ethiopia

1. It may be difficult to forecast where I will be geographically after 5 years; but professionally, I am very optimistic that I move forward in implementing whatever I have learned or exposed to at the EHESP school of Public Health. During my stay here in France/ Paris, I have the opportunity to learn in class, at field level, from my colleagues and on interaction on daily bases. Thus,

after five years from now, I would be able to apply the knowledge and skills I have grasped here in to practice in helping the needy community who are dying from many controllable and preventable diseases. With the help of God, I have also the deep interest to continue and pursue my PHD in Public Health.

2. I am very happy to come here which is a totally different environment from my country. I hope I will enjoy more, but my main challenge now is the language. I have stated French courses but that is from scratch and may take some time till I will be used to it.

3. With a health and general Public Health background, I have the experience of working in the area of HIV/AIDS prevention and care and support, Reproductive Health, Expanded program on Immunization, environmental sanitation, health education, community based participatory health activities and many other

Public Health related activities. I have a strong desire and deep internal motivation to upgrade my education in the field of Public Health in order to help the community through rendering quality services at each level and establishing sustainable community based activities with the active community participation. Going through MPH course also enables me overcome many of the challenges that I have been facing in my career in the past, and helps me to establish ongoing monitoring and evaluation in each projects/ programs that I will be dealing with.

11. Busy, interactive, learning forum.

12. Going out to some interesting places, reading books, listen to spiritual songs and just resting at home.

Mitiku.Telillaraga@eleve.ehesp.fr



TORMOS
Anita

Paris, France

4. I would have to say the trip to the Alps, it doesn't apply to all but wow what great memories!

8. Matsuri! I love sushi too much, I should move to Japan.

11. Cold, Hot chocolate, Laughing.

12. Café pirinhas in Cuba.

Anita.Tormos@eleve.ehesp.fr



WIEHE Lenja

Germany

Lenja.Wiehe@eleve.ehesp.fr



WOLDETSADIK

Mahal

Addis Ababa,
Ethiopia

- 6.** Montmartre, I simply adore this part of Paris and don't have any specific reason why.
- 11.** Class, hot-chocolate, Constantin.
- 12.** Discovering small local restaurants and cafes around the city with friends.
- 13.** To strive to be dependable and self-sufficient.

Mahlet.Woldetsadik@eleve.ehesp.fr



YADAV Ruby

Biratnagar, Nepal

- 1.** I will probably be in my own country if it works as I plan or any developing country, working in some organization in Public Health.
- 2.** Food in Rennes, industrial packed one, was the biggest surprise contradictory to the famous French cuisine.
- 3.** I want to contribute something to improve the overall health status of people in my part of world.
- 4.** Christmas party at Reid hall grand salle.
- 12.** Roaming around Paris with friends.

Ruby.Yadav@eleve.ehesp.fr



MPH STUDENTS' EVENTS



POTLUCK FOR PAKISTAN

Following the 2010 floods in Pakistan, the PHIN Association organized a 'Potluck for Pakistan' to raise funds for relief work. Students brought traditional food specialties from their culture to share and the event was well attended.



MPH STUDENTS' EVENTS



CHRISTMAS PARTY



Before Winter break, MPH students and staff gathered together to share festive foods and exchange gifts in a 'Secret Santa' exchange.

MPH STUDENTS' EVENTS



INTERNATIONAL WOMEN'S DAY



On March 8th, the PHIN association organized a workshop with interested students concerning International Women's Day (IWD). Students had an opportunity to share their ideas, feelings and knowledge on issues surrounding gender equity, violence against women, empowerment and gender solidarity. Students prepared and facilitated a workshop dedicated to the meaningful work that these women are doing in Kenya, Cambodia and Congo. The stories of Wangari Maathai, Somaly Mam and Rose Mapendo were shared as a way to conscientize and create critical reflection among students about the challenging yet courageous lives of women. Due to the success that the IWD workshop had, the PHIN association created a Knowledge Sharing Initiative and appointed Michael Mueku to lead the initiative. We hope that this will continue to create more opportunities for students to share issues that they feel passionate about and learn from one another.

MPH STUDENTS' EVENTS



PRESENTATIONS FOR MPH1'S
EOHS MODULE

MPH STUDENTS' EVENTS



MPH2 TRIP TO AJACCIO,
JUNE 2011



MPH1 TRIP TO BOLOGNA,
MAY-JUNE 2011

